

# **Overview: FR BMPs for Water Quality and Other Related Guidance January 12, 2022**

Carmen Hardin, Applied Forestry Bureau Director

# Forestry Management-Related Guidelines

*(Not all inclusive)*

- FR BMPs for Water Quality
- FR BMPs for Invasive Plants
- Biomass Harvesting Guidelines
- Forest Health Guidelines
  - EAB and Ash Management
  - Oak Wilt
  - HRD
- Silviculture Guidelines
- Aesthetics
- Species Guidance
  - Birds
  - Mammals
  - Reptiles/Amphibians
- Northwest Sands Habitat Corridor Plan
- Habitat Conservation Plans
  - Karner Blue Butterfly
  - Northern Long-eared Bat *(in development)*

# Origins of BMPs for WQ

- Best Management Practices (BMPs) are designed to protect water quality by minimizing nonpoint source pollution from forestry activities.
- 1977 Clean Water Act. Section 208.
  - Control silviculturally related nonpoint sources of pollution “to the extent feasible”
- 1987 Water Quality Act. Section 319.
  - Required each state to develop and implement a program to reduce nonpoint source pollution to the “maximum extent practicable”

# BMPs in Other States

State	Michigan	Minnesota	Maine	Wisconsin
BMP Manual Date	2009	2013	2017	2010
Type	Quasi-Regulatory	Voluntary	Quasi-Regulatory	Quasi-Regulatory
Most Recent Application	91%-2016	79%-2017	89%-2018	90.7% - County 2018 97.2% - State 2018 92.9%- Federal 2019 90.5% - Large 2019 94.2% - NIPF 2020

Source: NASF, <https://www.stateforesters.org/bmps/>

# BMP History in Wisconsin

- 1990: Wisconsin DNR and Wisconsin Paper Council produced brochure on BMPs
- 1992: Four workgroups formed to develop an organized BMP program in partnership with Lake State Forestry Alliance
- 1995: First Field Manual published and BMP monitoring began
- 2001: BMP Advisory Committee
  - Provide leadership, advice, and guidance to promote long-term success.
  - Committee represents a variety of interests and backgrounds with members representing many organizations
- 2010: Last revision of BMP manual (previous revisions in 1997 & 2003)

# BMPs for WQ Advisory Committee

The Forestry Best Management Practices (BMP) Advisory Committee was created in November 2001 to provide leadership, advice, and guidance to the Department of Natural Resources in order to promote the long-term success of the Forestry BMP Program on issues including:

- Protecting water quality through the voluntary regulation of forest management activities and use of Forestry BMPs that are practical and cost-effective.
- Pursuing research that will guide the update and development of Forestry BMPs.
- Monitoring the application and effectiveness of Forestry BMPs.
- Assessing the implementation of Forestry BMPs to achieve sustainable forest management goals.
- Developing education, training and outreach initiatives.
- Increasing public awareness and understanding about Forestry BMPs and how they help to improve the social, economic, and ecological values of Wisconsin's forests.

# BMPs for WQ AC Members

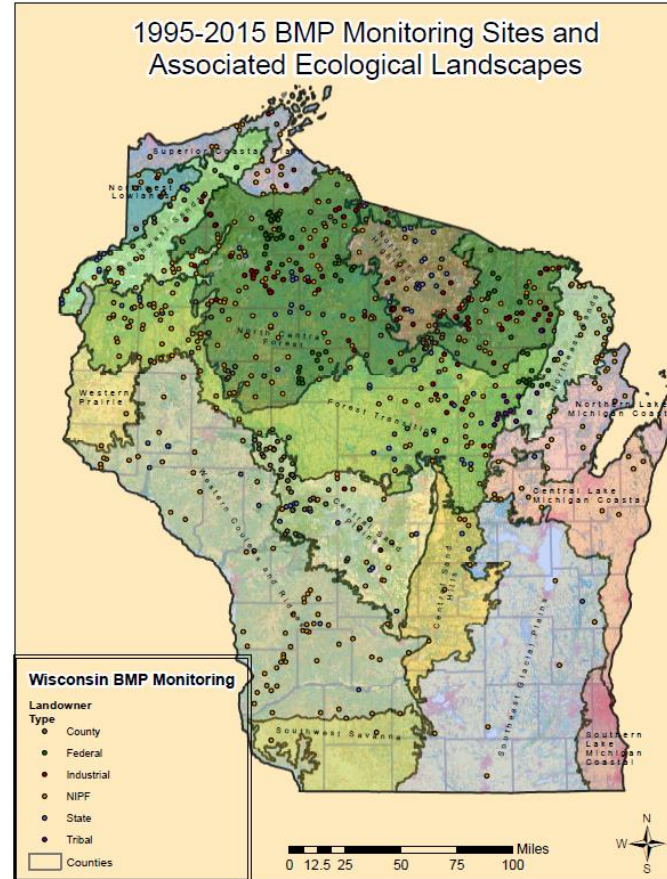
- WFCA
- Wisconsin's River Alliance
- Biewer Lumber
- Master Logger Association
- WWOA
- Wisconsin Paper Council
- LP
- Wisconsin Consulting Foresters
- Ahlstrom-Munskjo
- NRCS
- USFS
- TU
- PCA
- GLTPA

# Wisconsin BMP Monitoring

- Evaluate 119 BMPs
  - Application and Effectiveness
  - Five Monitoring Categories
    - 2 BMPs on *Fuels, Lubricants, Waste and Spills*
    - 18 BMPs on *Riparian Management Zones (RMZs)*
    - 47 BMPs on *Forest Roads*
    - 36 BMPs on *Timber Harvesting*
    - 15 BMPs on *Wetlands*
- Do not evaluate Chemicals, Site Preparation/Tree Planting and Prescribed Burning/Wildfire BMPs

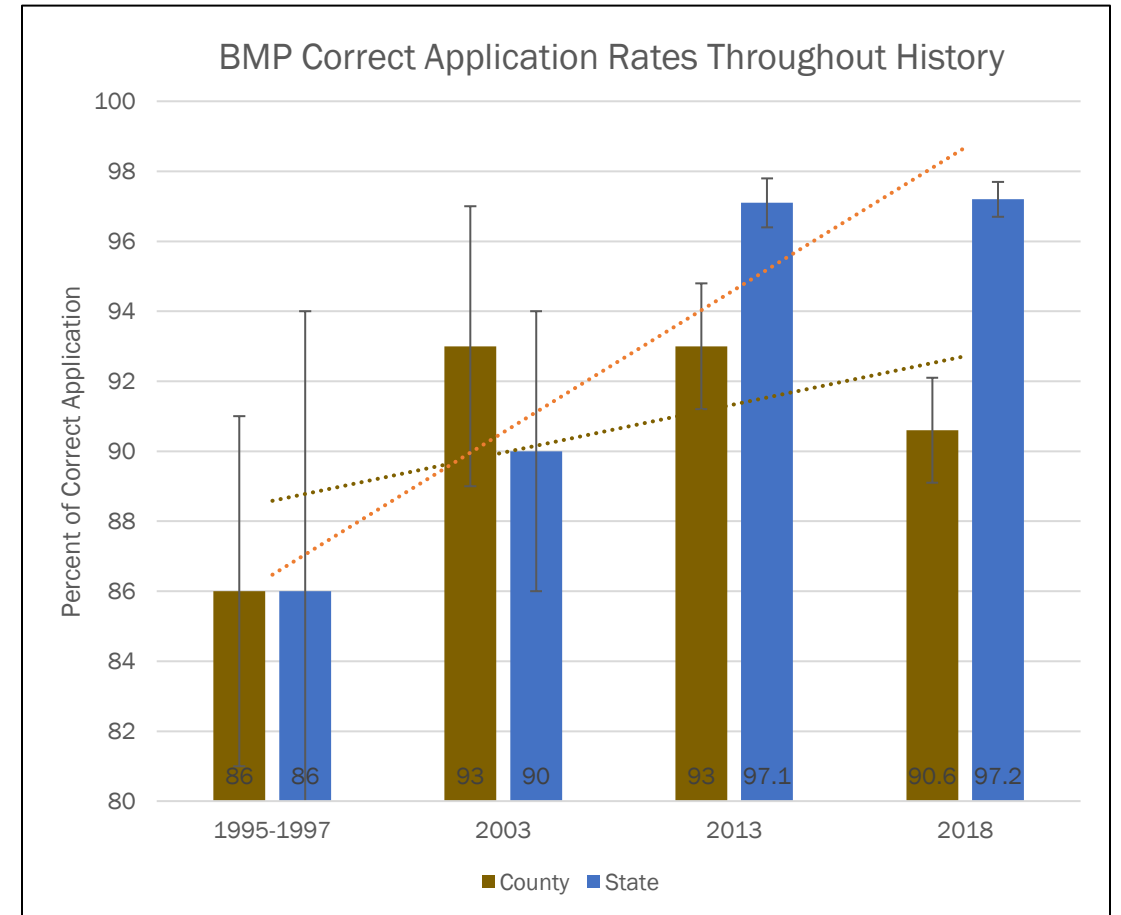


# BMP Monitoring History



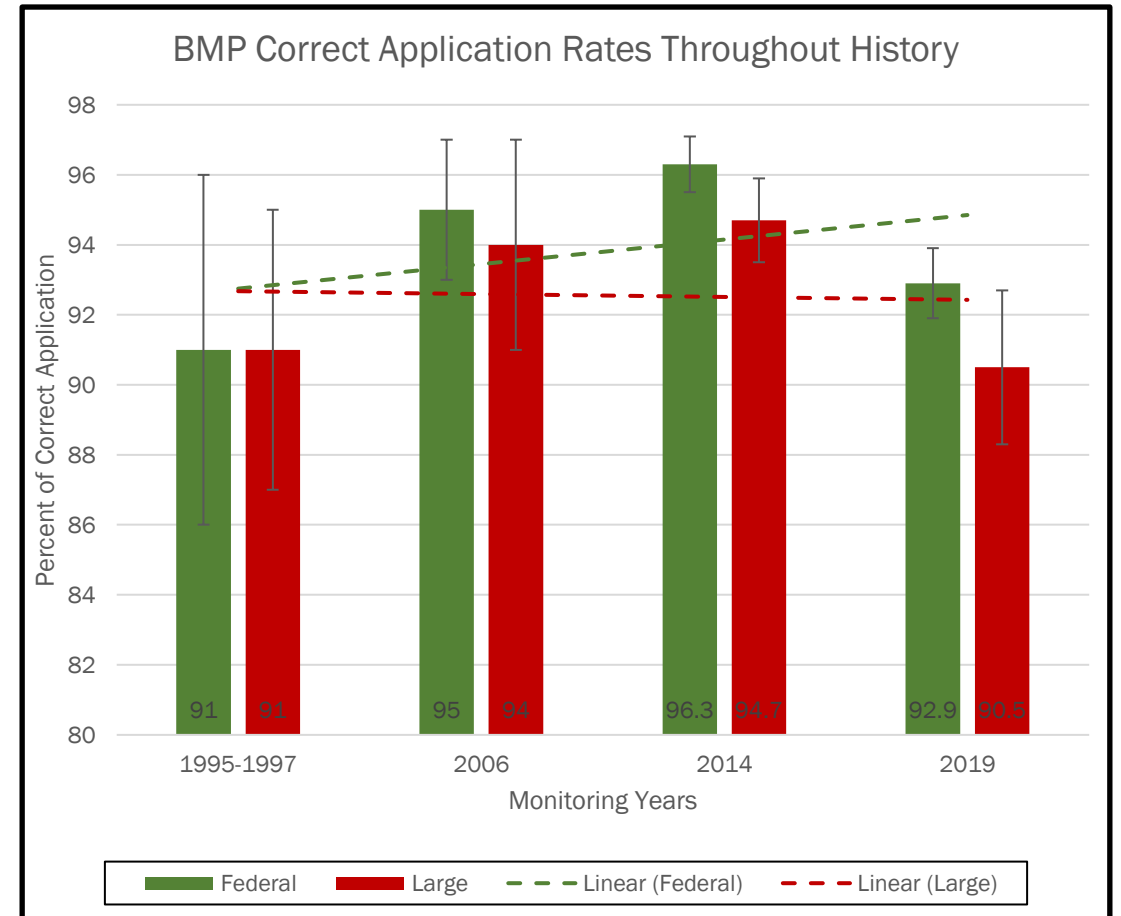
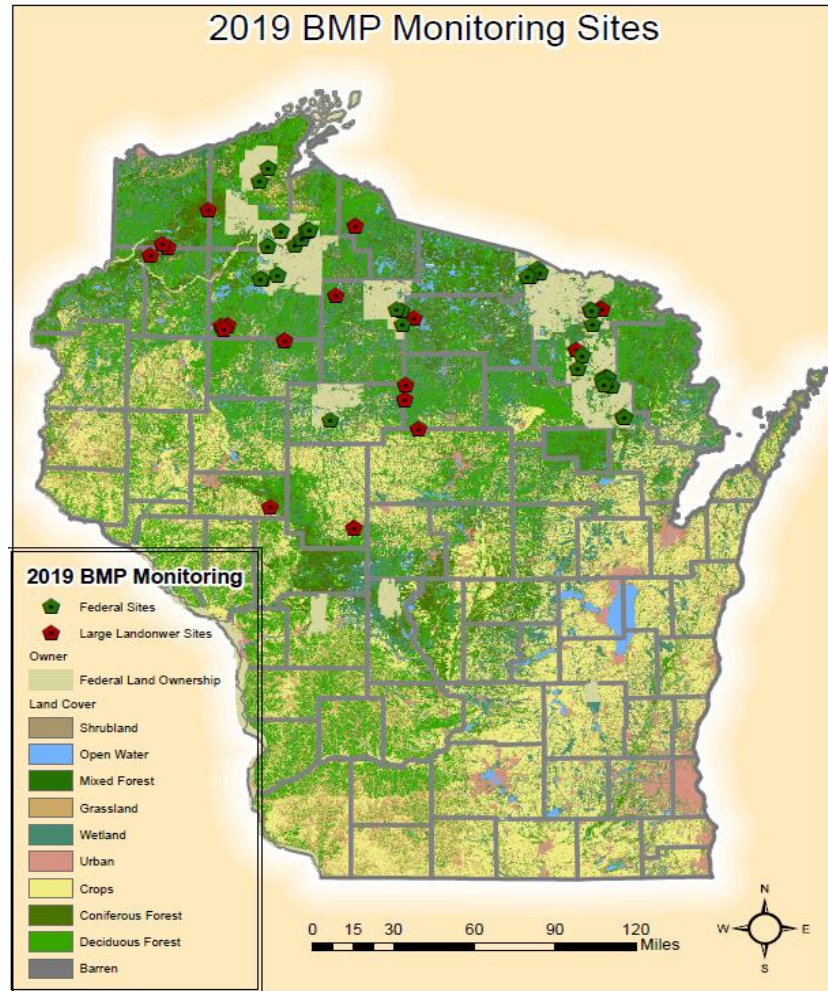
- 889 Sites from 1995-2020
  - State - 124
  - County - 155
  - Federal - 112
  - Large - 113
  - NIPF - 373
  - Tribal - 12

# 2018 BMP Results



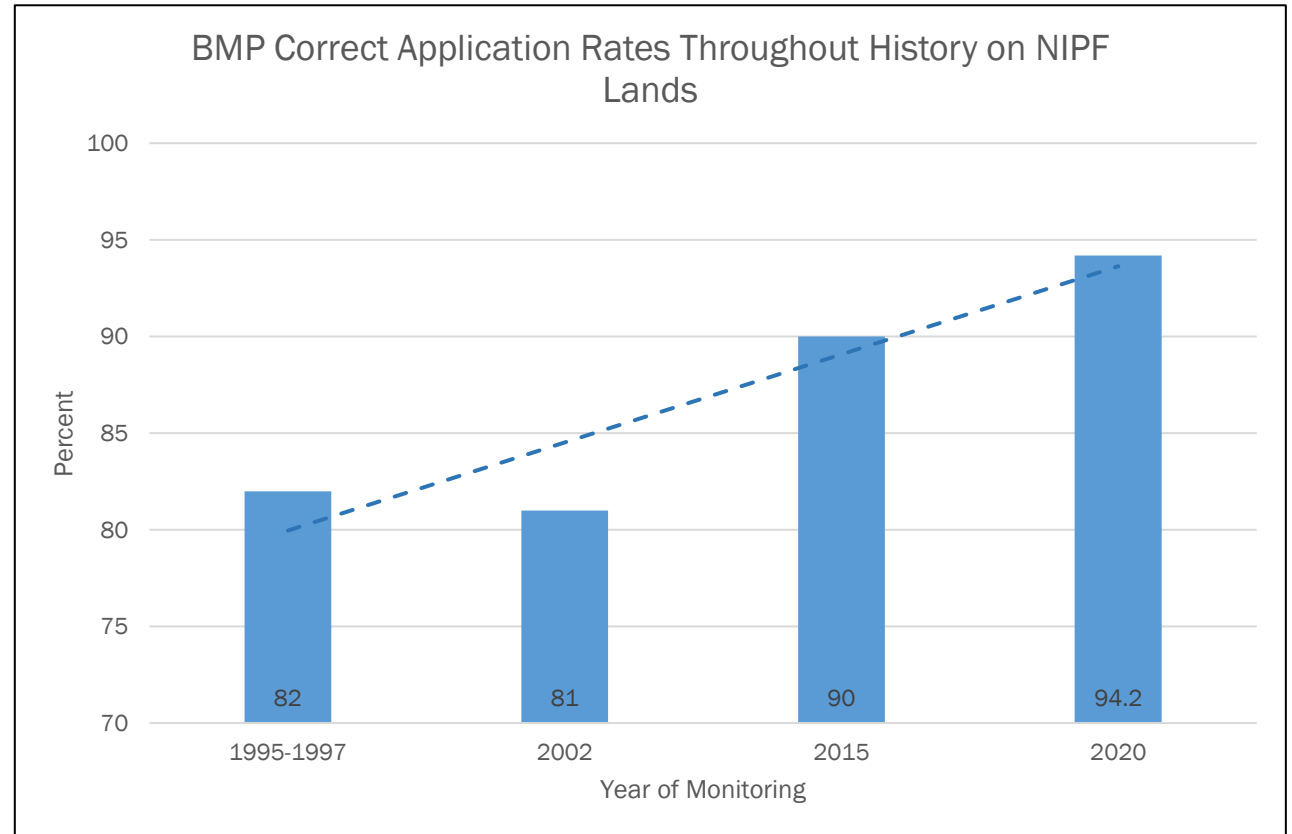
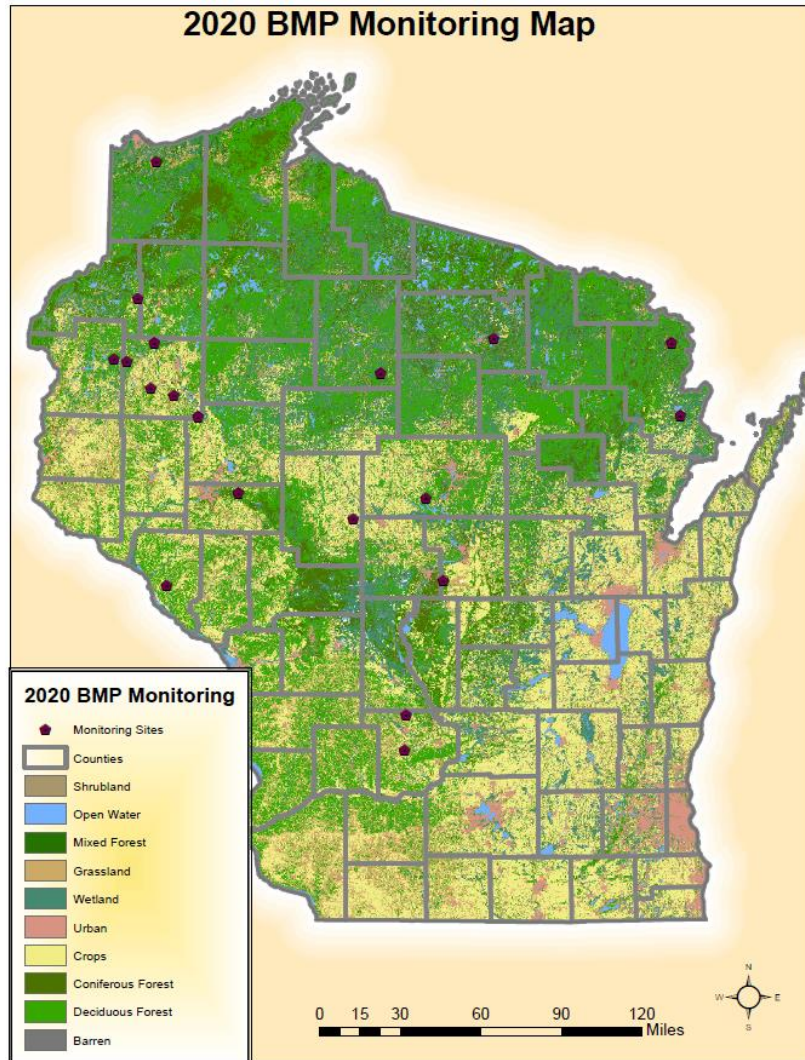
- 34 Sites on County Lands
- 38 Sites on State Lands

# 2019 BMP Results



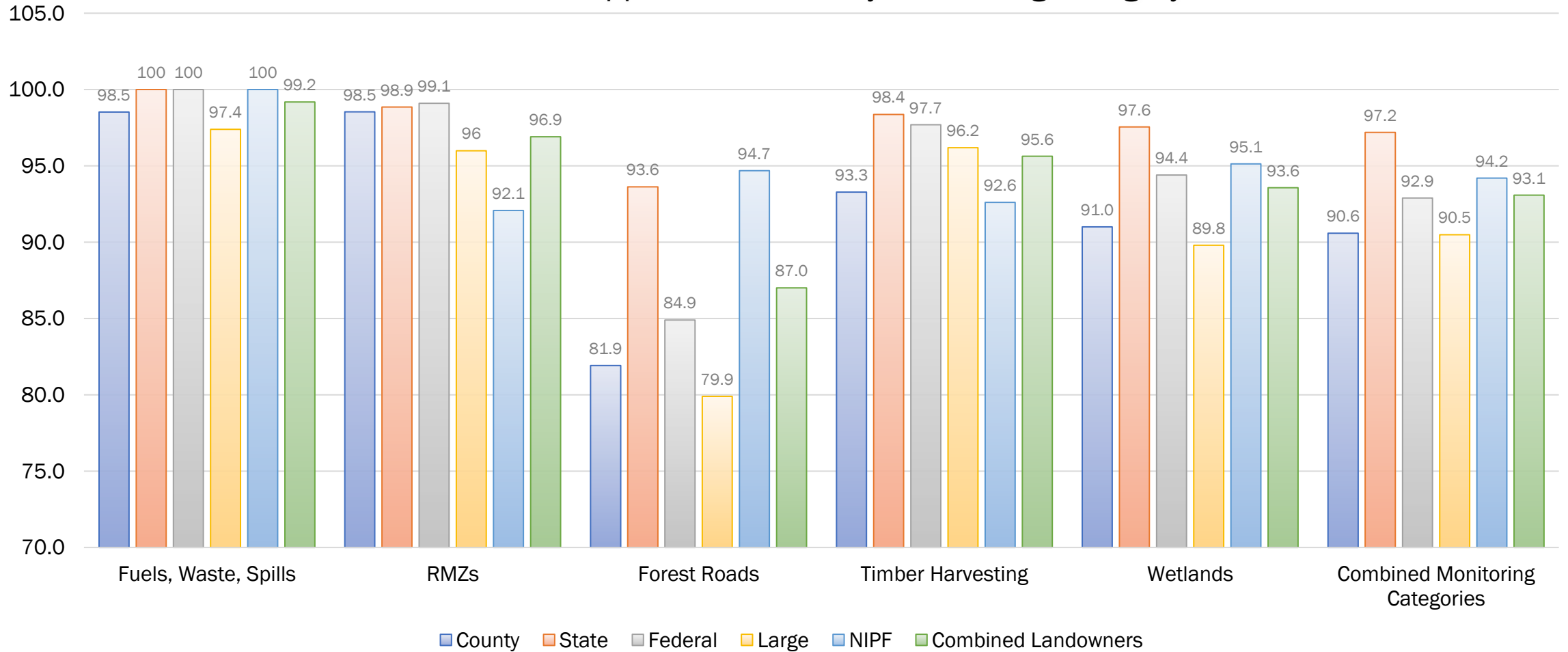
- 35 Sites on Federal Lands
- 19 Sites on Industrial Lands

# 2020 BMP Results



- 19 Total Sites
  - 15 MFL Sites
  - 4 Non-MFL Sites

## 2018-2020 BMP Application Rates by Monitoring Category



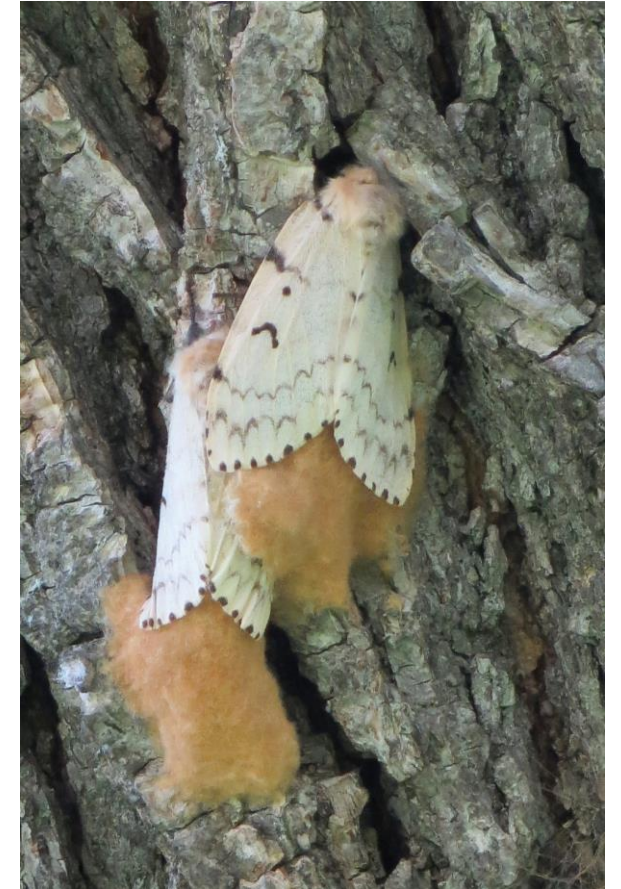
# Takeaways and Future Direction

- When BMPs are used correctly, water quality is protected 99% of the time.
- BMP water quality impacts are observed up to 70% of the time when BMPs are not used where needed.
- The BMP monitoring Category of *forest roads* receive the lowest correct application rate for almost all landowners.
- Next BMP Monitoring Cycle will take place 2023-2025.



# *Lymantria dispar* - Gypsy Moth

- Entomological Society of America's (ESA) has decided to rename the Gypsy Moth
- New name is expected in 2022
- Working with DATCP and UWEX to understand and coordinate changes



# CONNECT WITH US

**Carmen Hardin**

Carmen.Hardin@Wisconsin.gov



/WIDNR



@WIDNR



@WI\_DNR



/WIDNRTV



"WILD WISCONSIN:  
OFF THE RECORD"